

# RESTART WITH H.E.A.R.T.

*Our district plan for hybrid learning to bring our students back with careful attention to health, environment, academics, relationships, and teamwork for the 2020-2021 school year.*



July 31, 2020

Dear Linwood Schools' Families and Staff:

We hope this letter finds you well and you are enjoying the summer weather! We know that a letter from school during the summer can feel like we may be rushing the break, but we are excited about opening our school doors again for the 2020-2021 school year. It is important to us to reach out and update our families and staff about our return to school.

During the last month, with feedback from Linwood staff who have met since May, our Return to School Teams (RTS) have been working on our plans and protocols which are in line with the NJ DOE's guidance in [The Road Back: Restart and Recovery Plan](#). Our RTS Team was divided into three subcommittees - Health and Safety, Academic, and Social-Emotional Mental Wellness. These included staff, parents, BOE members, community medical personnel, our school physician, and more. Our committees have been and continue to be an excellent resource for our planning. Through open communication, crowd-sourcing ideas, and teamwork, we were able to review [survey data](#), highlight our expertise in a variety of areas, and capitalize on our committees' structure to inform decision making. Thank you to all of the participants for their work so far.

We have titled our return to school plan Restart with H.E.A.R.T. It was clear, as our committees worked to design a plan to reopen, that we shared a passion and commitment to our students and staff. The acronym H.E.A.R.T. aligns to the ideals that are the foundation of the plan - Health, Environment, Academics, Relationships, Teamwork. Each of these words filtered through our committee discussions and planning so we felt it was necessary to use these guiding principles for design. Please keep in mind that the current public health matter is changing, evolving, and shifting each day and week. Our planning must remain fluid and flexible, and it involves scenarios that range and shift from a hybrid model to a virtual model and to a fully open model. We have worked diligently to meet the needs of our students while threading through the design the ability to shift between models if the situation changes due to health related circumstances.

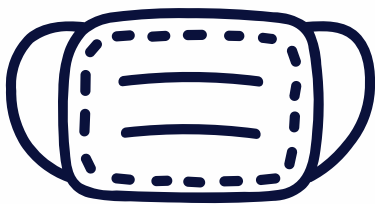
We are well aware that one individual plan will not satisfy all families and students. We are also aware that planning under these complex circumstances presents considerable challenges to reopen. This is a balancing act. We are balancing the guidance from the NJ Department of Education to follow COVID related health and safety measures while also opening our doors to students and staff for quality instruction and appropriate interaction. The excitement and energy that comes each year as we prepare to open still remains. We cherish the opportunity to welcome our students back into our buildings. This year will look different but we are focused on the idea to Restart with H.E.A.R.T. The following documents highlight the steps we will be taking as we implement our Restart with H.E.A.R.T.



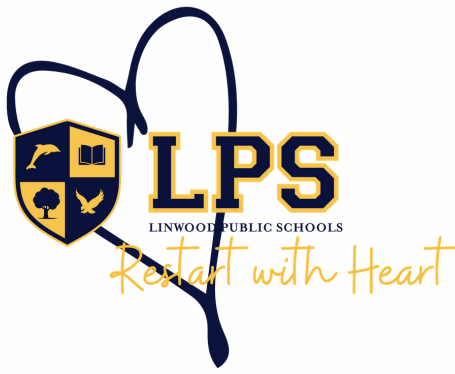
# H.E.A.R.T.

## HEALTH

THE HEALTH AND SAFETY OF OUR STUDENTS AND STAFF CONTINUES TO BE OUR TOP PRIORITY



- Daily screening will take place each day. Specific details will be provided as we get closer to the start of the school year.
- Students and staff will be encouraged to wash their hands with soap and water throughout the day and scheduled times will be included for this purpose.
- Hand sanitizer (>60% alcohol) will be available in all classrooms, at entry points, and at locations throughout our campuses. If hand washing cannot be done, sanitizer locations on our campuses will support good hand hygiene.
- Students and staff will be required to wear masks during the day. Mask breaks will be built into the schedule in both buildings. The District has purchased masks as well as other Personal Protective Equipment for use in classrooms - gloves, face shields for teachers to use in addition to masks, disinfecting wipes for each room, and social distancing signage.
- We encourage students to bring their own face covering/mask; however, we will have masks in the event that a personal one is lost or needed.
- Coordination with our school nurses, school physician, community medical personnel, and the Atlantic County Department of Health have allowed us to create protocols for anyone who may develop symptoms or comes into contact with someone with symptoms. Our response will follow the guidelines provided by the NJ Department of Health and Atlantic County Department of Health.
- As always, if your child is sick, please keep him/her at home. Our school nurses will be sharing more information with parents about healthy habits, hand washing, and other measures that can be taken to prevent illness.



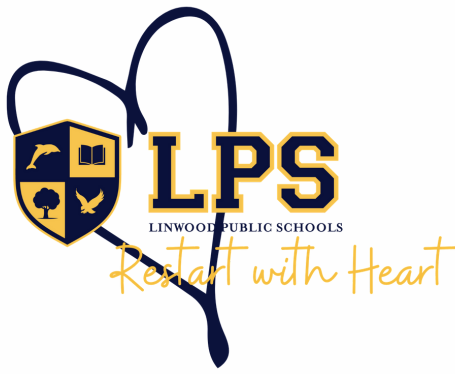
# H.E.A.R.T.

## ENVIRONMENT

**THE INSIDE OF OUR SCHOOL BUILDINGS AND FLOW MAY LOOK A LITTLE DIFFERENT. THAT DOES NOT CHANGE THE MAGIC THAT HAPPENS INSIDE.**

- Each building will utilize multiple entrances and exits to minimize the volume of students entering the building for arrival/dismissal.
- Social distancing measures have been taken in each classroom spreading desks up to 6 feet apart per CDC and ACDOH.
- Floor locations will be marked to identify appropriate social distancing in specific locations including areas that will be identified outside of our buildings at the entrances.
- We have implemented advanced cleaning and disinfecting measures in our buildings in line with recommendations from our product vendors and with other best practices from the CDC and manufacturers.
- Students will be grouped in cohorts and receive all instruction in one classroom to minimize the amount of contact between students.
- Teachers will move between classrooms in order to provide students with their instruction.
- Preventative maintenance schedules for our HVAC systems meet or exceed manufacturer recommendations for filter cleaning and replacement.
- Electrostatic sprayers will be utilized to enhance cleaning procedures within the schools. The District uses ODOROX air purifier machines in specific locations throughout the building, and cleaning and maintenance schedules are being developed to increase routine cleaning and disinfecting as well.
- As per guidance, teachers and staff will be encouraged to open windows and doors to increase airflow when appropriate.
- Wipes will be available in the classroom in order for cleaning throughout the day.





# H.E.A.R.T.

## ACADEMICS

EXCELLENCE IN EDUCATION  
WILL CONTINUE FOR OUR  
STUDENTS

	Monday	Tuesday	Wednesday	Thursday	Friday
Blue Cohort	In person	In person	Virtual instruction	Remote	Remote
Gold Cohort	Remote	Remote	Virtual instruction	In person	In person

- The schedule for our September return is a hybrid model. Our in-person model is based on a cohort design. Students will be split into two cohorts. Families with siblings will be placed in the same cohort to assist in planning. By cohorting our students, we can meet the social distancing guidelines mentioned throughout the plan and as recommended by the CDC.
- This design allows for in-person instruction for full days with our students. It provides academic consistency with back-to-back days of instruction and maximizes our contact with teachers and students in the cohorts. The design also aligns with health and safety considerations by providing a window of time for each cohort to work remotely so proactive responses for any health-related situation that may arise can be made.
- Some of our students in the earlier grades and other specialized programs will attend school on all in-person school days. Our half-day Preschool, half-day Kindergarten students, and some students in specialized programs will be in-person on Mondays, Tuesdays, Thursdays, and Fridays. These classrooms are some of our largest on campuses and the square footage and class counts allow for social distancing.
- As always, our preschool students will have a 4 day week. They will not be participating in virtual learning day on Wednesdays.
- Kindergarten students will have virtual learning days on Wednesdays. Our program will be structured just like a normal school year with half day kindergarten and expanded day kindergarten attending in person learning Monday, Tuesday, Thursday and Friday.
- The 2020-2021 School Calendar was revised at the Board of Education Meeting on July 22nd.
  - **BLUE** cohort students will begin school on Tuesday, September 8.
  - **GOLD** cohort students will begin school on Thursday, September 11.
  - The school calendar will be reviewed throughout the year as we enter into specific months to maximize instructional time to the greatest extent practicable.
  - The cohort sequence will be blue, blue, virtual, gold, gold. With a few adjustments during shortened school weeks.
- Parent Virtual Option: We received guidance from the DOE on Friday, July 24 as to the expectations for the parent virtual option. A survey will be completed to inform the District of those families who may select this option for a 100% virtual learning experience. We were awaiting the guidance so we could design a survey with the most current information.
- Additional details for the structure of our virtual and remote days will be forthcoming after the receipt of our latest survey.
- Our staff will receive professional development in numerous areas to complement and enhance the training that has already been provided. These include but are not limited to differentiation, online learning practices, SEL practices in the classroom and virtual setting, and standards alignment.
- Short, frequent assessments will be utilized to determine gaps in learning and inform instruction.
- Through successful planning and with the support of the LEF through the past few years, we will be able to go one-to-one with Chromebooks for our students in grades three through eight.
- More specifics about the individual schedules in each building will be forthcoming from Mrs. Care and Dr. Luff.
- Other considerations for plans were vetted throughout the process by our Return to School Committees. Every other day instruction, half-day programming, and week-to-week programming, as well as variations of those were discussed. In order to meet the needs of consistency for schedules, maximizing instructional minutes, health and safety considerations, and current guidelines, our hybrid plan meets those expectations. This plan also allows for the required flexibility of increasing our in-person offerings while monitoring the current health situation as the circumstances improve or allow. Clearly, under normal circumstances our goal is to have all of our students and staff in our schools. This is not a normal circumstance.



# Sample Hybrid Schedule

	Monday	Tuesday	Wednesday	Thursday	Friday
BLUE cohort	In-Person	In-Person	Virtual	Remote	Remote
	Classroom instruction Targeted skills and standards Assessment & feedback		Schedule of Google Meets  Focus on previewing, reviewing, or class discussion	Asynchronous Learning Complete independent tasks & project based learning Online learning platforms	
GOLD cohort	Remote	Remote	Afternoon small group or individual remediation	In-Person	In-Person
	Asynchronous Learning Complete independent tasks & project based learning Online learning platforms			Classroom instruction Targeted skills and standards Assessment & feedback	

In person schedule:

**Seaview 8:30-3:00 --- Belhaven 8:15-2:45**

Schedule is subject to change

Specific details about individual school schedules will come from your building principals

Schedules and cohort details will be released the week of the August 17th



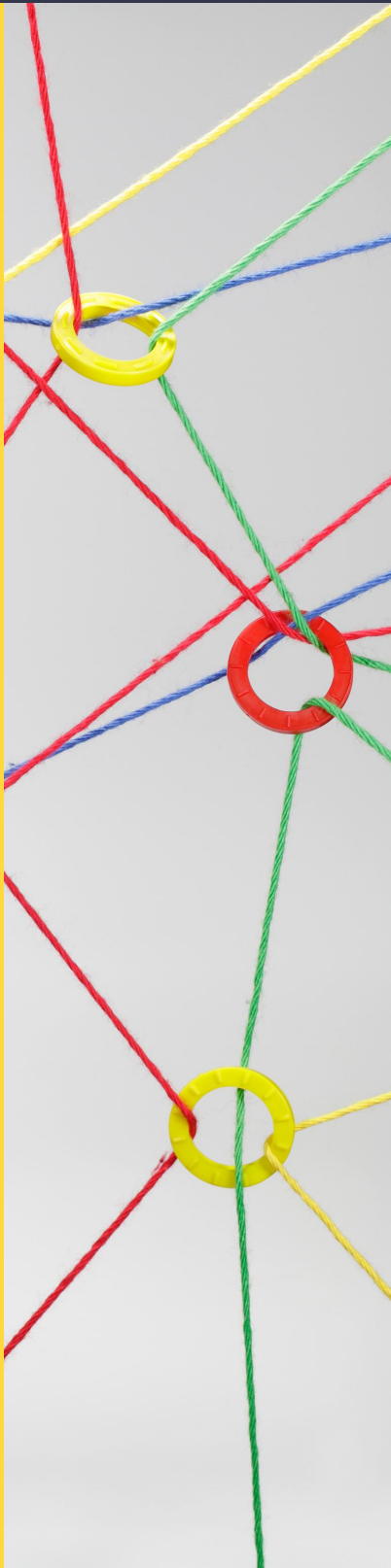


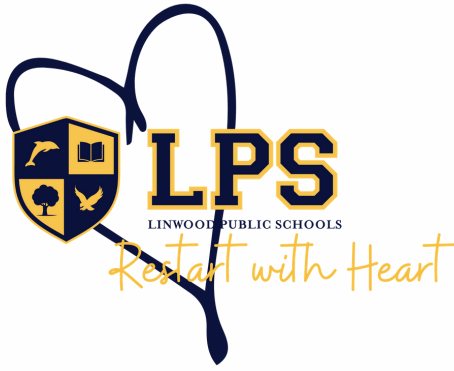
# H.E.A.R.T.

## RELATIONSHIPS

THE RELATIONSHIPS FORMED BETWEEN OUR STAFF AND STUDENTS ARE A LARGE PART OF WHAT MAKES THE LINWOOD SCHOOLS SO SUCCESSFUL.

- Students will receive surveys in order for our district to collect data on students' thoughts as they return to school. We will be using these surveys to develop ways for students to feel comfortable and safe as they return in September.
- Our staff will be creating Welcome Back videos for students. This will be a chance for students to get a little sneak peek at what our buildings will look like when they return to school and help students transition back to our schools.
- At Seaview and Belhaven, morning meetings will be held everyday when students arrive in their classrooms. This will be a sacred time for students to connect with their teacher and one another.
- At Belhaven, we will continue with our advisories to connect students with peers and staff in the building. Students will continue to take a leadership role with the school through our Street Teams as they plan Renaissance activities.
- Throughout the school day we will promote movement as much as possible. Teachers will be encouraged to schedule mask and wellness breaks throughout the day for their students to take a safe break when needed.
- Our staff will be encouraged to utilize outdoor spaces as classrooms. When the weather allows, teachers will be creative in where they deliver lessons to our students.
- Reset Centers- throughout the year we will be working to develop small reset centers in each classroom. These centers will offer an area in the room for students to take a break when they feel the need. The centers will be equipped with necessary materials for students to use in order to calm down and collect their thoughts.
- Professional development in the fall will be centered around a variety of important topics and one of those is on student and staff mental and emotional wellness. Staff will be taught co-regulation strategies and mental health awareness to support our students and colleagues.





# H.E.A.R.T.

## TEAMWORK

TOGETHER WE WILL WORK AS A SCHOOL COMMUNITY TO MAKE THIS SCHOOL YEAR A SUCCESS



Our school community has always worked together. It is the teamwork of our students, staff, and families that continues to enhance the success of the children in our schools. We value our relationships with your children and will continue to support them throughout this time. Although these are not normal circumstances and school may look different, one positive is that our teamwork and collective support can help us to Restart with H.E.A.R.T.!

As mentioned, we will continue to finalize more details within the plan over the next few weeks. Specific details beyond what has been shared will be completed and more communication will occur as we continue this process.

Thank you for all of your support as we navigate through this process. Linwood is a special place and we certainly appreciate the collaboration and words of encouragement. We look forward to the upcoming year! If you have any questions, please contact your building principal Mrs. Care or Dr. Luff.

Keep those Fins and Wings Moving!  
#FinsUpWingsUp-

**Brian Pruitt,**  
Superintendent

**Jennifer Luff,**  
Belhaven Principal

**Lori Care,**  
Seaview Principal

*a special thank you to our*

# Return to School Committees

## Health and Safety

Chair: Patrick Childs

Lori Care

Alexa Barrera

Steve Brown

Kevin Byrnes

Mary Ellen Ellenberg

Ann Forshaw

Jeffrey Gong

David Hieb

Denise Kellner

David Lamkin

Heather Lanzalotti

Casey Lowry

Jennifer Luff

Sam Mcgonagle

Aixell Mercedes-Perez

Heather Moran

Ezinne Nwotite

Brian Pruitt

Trish Skovron

## Social and Emotional

Chair: Susann Tahsin

Sangeeta Appel

Marybeth Atwood

Jackie Baltozer

Joel Caplan

Lori Care

Karen Ciasca

Miosoto Espinal-Waller

Steve Evinski

Shari Frolove

Kristi Grimley

Michele Hoffman

Julia Lockhart

Jennifer Luff

Kathleen Novasack

Marykate Pellegrino

Elizabeth Provenzano

Brian Pruitt

Roberta Vernon

## Academic

Chair: Nicole Sappello

Jennifer Bernardini

Lori Care

Holly Dileo

Melissa Duffy

Nancy Robinson

Veronica Stillman-Fath

Christine Flanagan

Shanna Gardner

Christine Harrison

Christine Johnson

Reema Kanzaria

Trish Levinson

Tara Lhulier

Jennifer Luff

Marybeth McKenna

Robin Moore

John Napoli

Frank Pileiro

Brian Pruitt

Christine Silverberg

Allison Wrigley

## Committee Meeting Progression

**Committee meetings were held on the following dates:**

**In house staff committee meetings**

May 7, 2020

May 14, 2020

May 21, 2020

May 28, 2020

June 4, 2020

June 11, 2020

**Community members added to committees**

July 8, 2020

July 15, 2020

July 22, 2020





# Highlights from The Road Back: NJ DOE Requirements for Reopening

- Complete and communicate the structure of the school reopening plan 30-days prior to the start of the school year.
- Complete and communicate full reopening plans on the district website by August 30.
- Establish a Return to School committee consisting of a stakeholder group that is representative of our schools and community.
- Create a Pandemic Response Team with diverse representation from the school community to centralize, expedite, and implement COVID-19 related decision- making.
- Follow NJDOE standards and provide instruction across all key content areas.
- Follow IDEA, 504 and ADA, plus all other special education laws and protocols.
- Follow NJDOE, state, and federal health guidelines and procedures for individuals who test positive for COVID-19.
- Follow NJDOE, state and federal health safety protocols around food service, daily cleanings and other school operations.
- Prepare students, staff, and families via clear, continuous communication with the school community.
- Be prepared to shift plan, in the event a facilities closure becomes necessary.



# Protocols for Positive COVID-19 Test Results

**Our district is committed to working with our families in order to offer as much support as possible in the event of a positive COVID-19 test. Below are the recommendations from the Department of Health:**

## **Persons with positive test result for COVID-19:**

- Parents and staff must notify their principal(s). Stay home at least 14 days since symptoms first appeared AND until no fever for at least 3 days (72 hours) without medication AND improvement of other symptoms. Siblings and household members also stay home for 14 days.

## **Persons with negative test result but symptoms with no other diagnosis:**

- Stay home at least 14 days since symptoms first appeared AND until no fever for at least 3 days (72 hours) without medication AND improvement of other symptoms. Siblings and household members also stay home for 14 days.
- For persons with a COVID-19 diagnosis without a lab test or persons with symptoms consistent with COVID-19 without a medical evaluation (e.g. monitoring symptoms at home):
- Stay home at least 14 days since symptoms first appeared AND until no fever for at least 3 days (72 hours) without medication AND improvement of other symptoms. Siblings and household members also stay home for 14 days.
- For people with other diagnoses (e.g. strep throat) that explain the symptoms, or when a health care provider says symptoms are connected to a pre-existing condition:
- Stay home until symptoms have improved. Follow specific return guidance for the health care provider or follow the guidance from the NJ Department of Health. If symptoms related to a pre-existing condition change or worsen, talk to a health care provider to determine next steps. Siblings and household members do not need to stay home. Healthcare Provider's note upon return to school.



# Restart with H.E.A.R.T.

*Let's move forward... together.*

## VIRTUAL OPTION SURVEY

If you plan to choose the virtual option, please be sure to click the icon to fill out our survey.



Still have questions?  
Click the icon to review our FAQ page.



Click here for our updated  
2020-2021 School  
Calendar



Find the latest news on  
our website.

Additional helpful links:

**[The Center for Disease Control](#)**

**[The Department of Health](#)**

**[Talking to Children about the Coronavirus](#)**

